

EarthTrack Payload Management

Maximize the productivity of your earth moving fleet



Unleash the full potential of your fleet

Experience the future of efficiency with the digital-enabled EarthTrack Payload Management system, featuring cutting-edge production monitoring tools designed to maximize the productivity of your earthmoving fleet.

By leveraging real-time payload data, you can boost productivity, enhance production efficiency, and ensure safer loading practices, while minimizing downtime. The system operates by transmitting payload data wirelessly between the truck and loader, enabling the loader operator to view the truck's weight in real-time and achieve the optimal load every time.

EarthTrack Payload Management is compatible with all brands, regardless of make and model, and integrates seamlessly into your existing setup by utilizing the truck's built-in weighing system. This ensures unparalleled performance and precision across your entire fleet while maintaining smooth operational integration.



EarthTrack Payload is a technology coming from our acquired company, RCT.



See it all, know it all

⊕ Better productivity

- + Increased fleet efficiency with optimized loading that ensures trucks operate at full capacity, reducing unnecessary trips and maximizing material moved per shift.
- + Reduced cycle times with real-time payload data so operators can make immediate adjustments, streamlining loading processes and minimizing delays.
- + Enhanced operational output by consistently achieving optimal payloads, which improves overall fleet performance and increases productivity with minimal operator training.

⊕ Enhanced safety

- + Ensure weight is properly distributed and prevent both overloading and underloading scenarios. Proper weight distribution ensures that the truck operates within its design parameters, enhancing overall safety and reliability.
- + Empower operators with the right tools and information to reduce the risk of spillage, which not only causes material loss, but also creates hazardous conditions that require clean-up.
- + All payload weights are clearly displayed to help the operators quickly ensure their loads are within safe limits. Real-time visibility allows operators to make informed decisions and adjustments on the spot, preventing potential overloading or underloading.

⊕ Comprehensive data

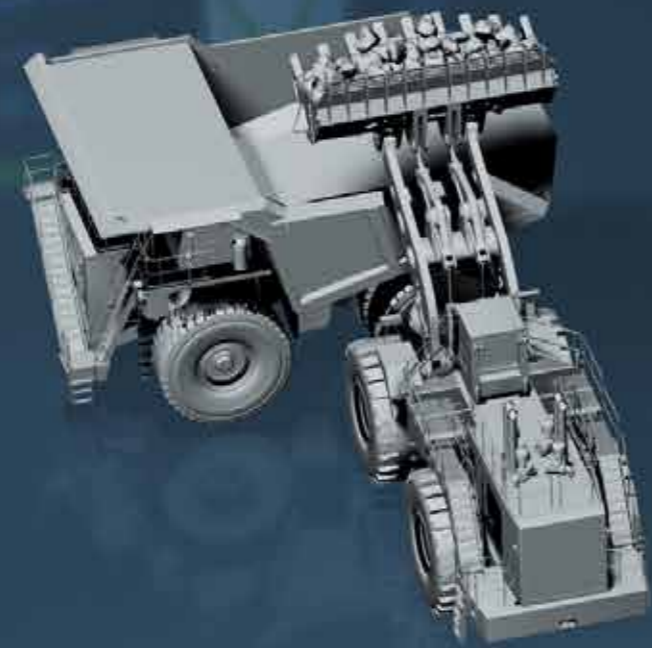
- + Allow the loader operator to monitor the truck's weight in real-time for optimal loading. Strut pressures from the truck transmit both 'weight' and 'weight distribution' to the loader, resulting in even and accurate payloads.
- + Record the number of loads per truck and loader, report average loads per truck, average bucket weight per loader, and display the total dirt moved by truck and loader across the fleet. This leads to greater productivity and increased Bank Cubic Metres moved per shift/truck.
- + Entire truck fleet payload is logged and can be downloaded in .CSV format for detailed analysis.

⊕ Extended lifespan

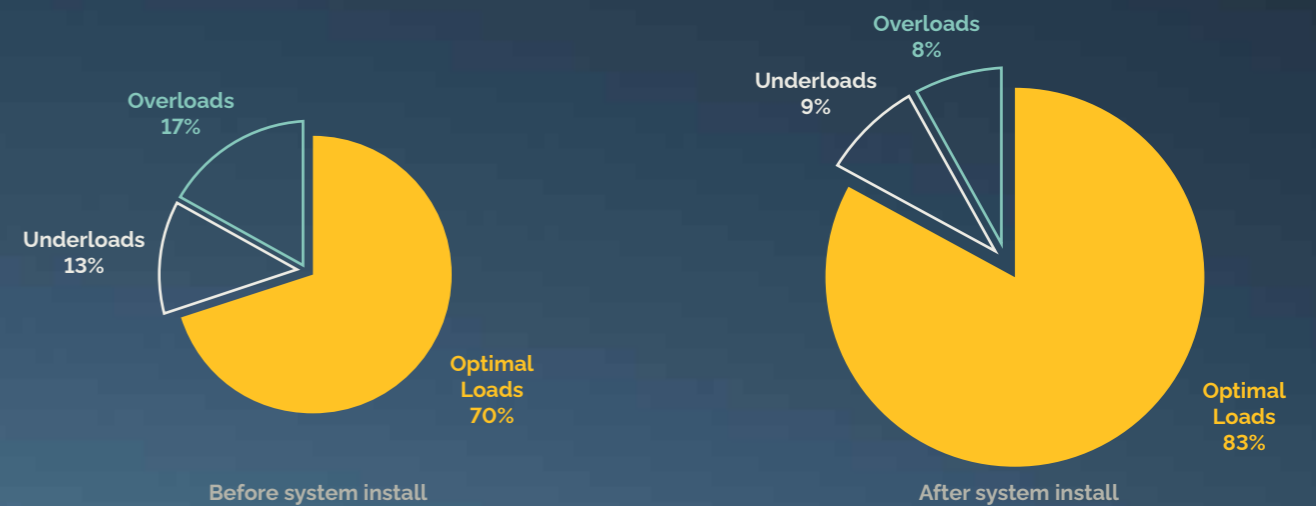
- + Avoiding overloads minimizes machinery stress and excessive strain on struts and tyres, resulting in reduced downtime and maintenance costs for a better return on investment.
- + Safeguard your OEM weight-related warranty and prevent costly repairs, ensuring extended use of equipment with peace of mind.
- + Efficient loading practices lead to optimized fuel consumption, reducing the amount of fuel needed to transport materials. This also reduces emissions, helps meet environmental regulations, and contributes to a greener operation.

Unlock peak performance

The bell curve illustrates payload results when an EarthTrack Payload System is installed. Data indicates optimal payloads increasing and over loads decreasing; thus improving productivity whilst reducing excessive stress.



With our system in place, we've seen a 13% increase in optimal loads with minimal operator training. Over time, operators will continually enhance their skills, leading to optimized truck loading and maximized overall fleet performance.



Payload options

Made for your requirements

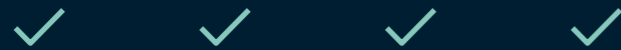
With five versatile options to choose from, our system caters to a wide range of operational needs. Each option is designed to be adaptable, ensuring that you can effortlessly find the perfect fit for your specific requirements.



OPTION 1

Truck and Loader

- + External LED display
- + In-cab interface
- + Cloud reporting



OPTION 2

Truck and Loader

- + In-cab interface
- + Cloud reporting



OPTION 3

Truck and Loader

- + External LED display
- + In-cab interface



OPTION 4

Truck

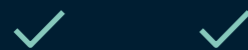
- + External LED display
- + Cloud reporting



OPTION 5

Truck

- + External LED display



Other data and information solutions

For any machine, make or model

We offer a range of data and information solutions for enhanced insights and decision-making.



EarthTrack GPS Asset Tracker

Say goodbye to manual tracking with a revolutionary solution that automates asset monitoring while providing actionable insights.

- + Always know where your assets are, aiding in better decision-making and coordination.
- + Receive instant notifications for geofence crossings or speeding incidents, supporting safety and compliance.
- + Accurately measure work hours to optimize asset use and proactively plan maintenance.
- + Keep up with maintenance schedules through precise service alerts.
- + Control machine access remotely for safety and maintenance purposes.



EarthTrack Digital Checklist

The advanced cloud-based system is expertly crafted to address the complexities of operational risk management with ease.

- + Compliant with international standards, it allows organizations to efficiently source operator data from a unified platform.
- + Elevate risk management strategies with our cutting-edge system and experience unparalleled efficiency and compliance.



EarthTrack Vehicle Monitoring

The state-of-the-art system is key to streamlined operations, slashing unplanned maintenance costs, and enhancing operator safety.

- + Tailored, real-time insights delivered to management at every level ensure optimal performance.
- + Seamlessly integrate critical machine and operator activity information to significantly boost efficiency across the entire fleet.



EarthTrack Machine Data Gateway (MDG)

Collate all the raw data from multiple sources to a single location.

Collate all the raw data from multiple sources to a single location.

The data retrieved and prepared by the MDG is the all-important first step in the data processing cycle.

Once stored, operations can leverage on this and have endless choices available to analyse data by uploading to its own business analytics software for actionable insights and explore opportunities across all aspects of the machine operation

United in performance. Inspired by innovation.

Performance unites us, innovation inspires us, and commitment drives us to keep moving forward. Count on Epiroc to deliver the solutions you need to succeed today and the technology to lead tomorrow.
[epiroc.com](https://www.epiroc.com)

