

# Better orebody understanding leads to better decision-making

Epiroc | CoreScan

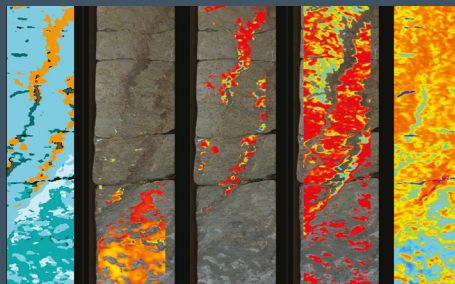
Epiroc

Epiroc's CoreScan, hyperspectral core imaging system, provides high-resolution mineralogy and geotechnical insights through automated core imaging.



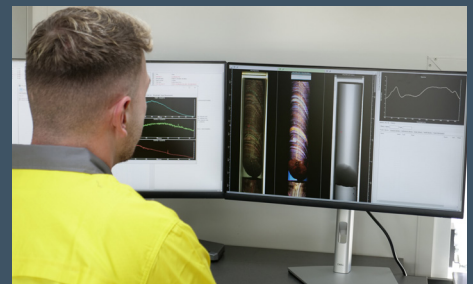
## Scan

Automated high-resolution acquisition.



## Analyze

Gather hyperspectral mineralogy and geotechnical data.



## Decide

Turn data into safer, smarter decisions.

## ⊕ Main benefits

**High data performance:** Fast, automated acquisition with consistent results.

**Mineralogical insight:** Hyperspectral imaging reveals mineral composition beyond the limits of human vision.

**Geotechnical and geologic integration:** Fractures, RQD, structures, and mineralogy in a single, unified dataset.

**Cost reduction:** Fewer lab analyses, less rework, and greater operational efficiency.

**Better understanding of the orebody:** Better decisions for exploration, mine planning, and processing.

# Transform core data into intelligent mineral intelligence.

## Better data, better decisions, better results.

### From core to decision – fully digital

---

#### ■ High resolution photography

25 µm resolution.

#### ■ Hyperspectral mineralogy

VNIR and SWIR hyperspectral imaging.

#### ■ 3D profiling and geotechnical data

High morphological precision.

#### ■ Automated processing

Consistent, objective, and repeatable.

#### ■ Integration with geological databases

Continuous workflow and seamless data delivery.



### Delivers core value across the mining lifecycle

**Exploration:** Better targeting and discovery.

**Resources:** Greater model reliability.

**Mine planning:** Optimized decisions and efficient schedules.

**Processing:** Maximized recovery through a better understanding of the ore.

**Mine closure:** Sustainable and responsible decisions.